

Text Tutorial 001 – Opening and Printing Your First Profile Using Snowpro Plus+

The following describes the minimum steps to print your first profile graph. Snowpro has been designed to be very user friendly and easy to use. However, it has many features not in previous Snowpro versions and will require some reading of this manual to fully take advantage of all the features and power of the software.

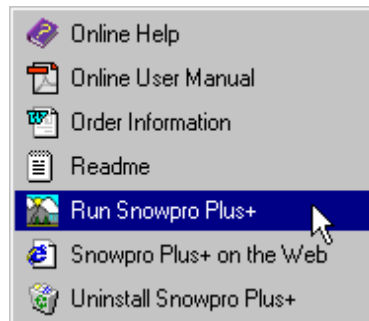


Figure 1: Windows Start Menu

1. Install the software.
2. Start the Software.
Click on Windows Start button, Snowpro Plus+, Run Snowpro Plus+.

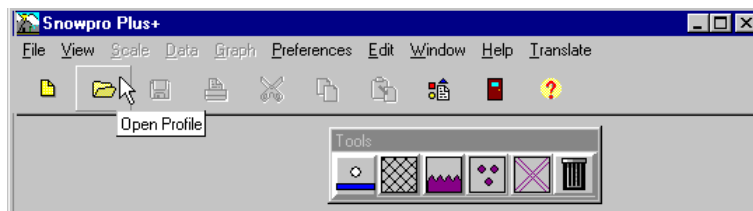


Figure 2: Snowpro Main Menu

3. Click on the Menu Open Folder button.
The open dialog box will be displayed.

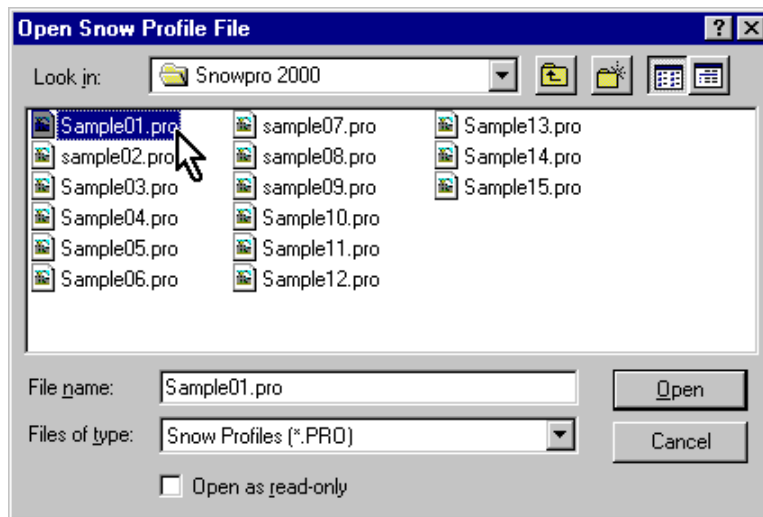


Figure 3: Opening Snowpro File

4. Click on a sample profile.
You may select more than 1 file. There are 15 samples supplied with the software.
5. Click on Open button.
The graph will be displayed.

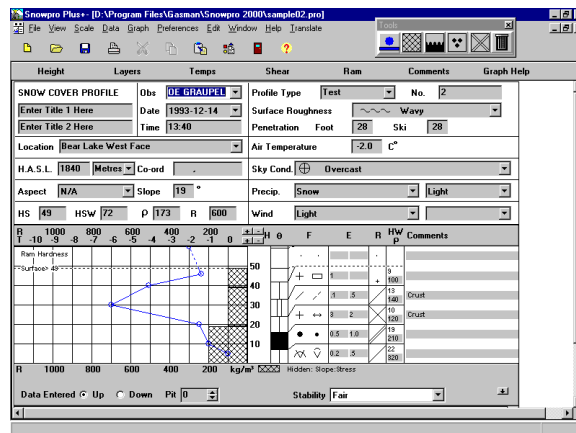


Figure 4: Sample Snow Profile Graph

You need to set up your name in the Preferences before printing the profile.

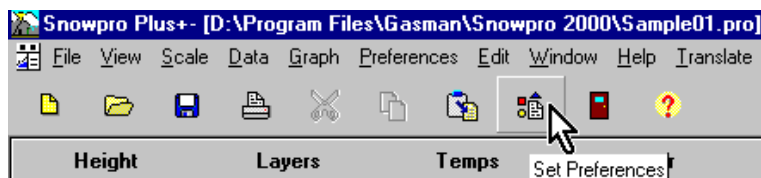


Figure 5: Selecting Preferences

1. Click on Preferences Menu button.

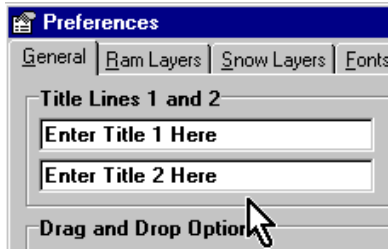


Figure 6: Entering Title Lines in Preferences

1. Enter your company or organization name in Title line 1.
2. Enter other information such as the area or other company information in Title line 2.



Figure 7: Preferences Buttons

1. Click on Save button to save the preferences information.
2. Click on OK button to exit the Preferences form.



Figure 8: Printing the Graph

1. Click on Menu Print button.
The profile graph will be sent to the current default printer.